



309 Laurelwood Rd. Suite 20  
 Santa Clara, CA 95054  
 sales@sstgroup-inc.com

Sales Support: 800.944.6281  
 Outside US: 408.350.3450  
 Fax: 408.350.3100

**RDM – Radiation Dose Monitor - New Features**

**Dose Management**

**Effective dose calculation for all modalities:**

Calculation of the effective dose in conventional and interventional radiology, mammography, scanner, and nuclear medicine, as well as for hybrid modalities (PET-CT, SPECT-CT).

Calculations that respect the recommendations established to protect patients from radiation (including the recommendations of the ICRP).

CT	DX	MG	PT/CT	RF	XA	Alert Dose	E (mSv)	Total DLP (mGy.cm)	Total DLP 16 (mGy.cm)	Total DLP 32 (mGy.cm)
						Green	10.71	626.31		626.31
						Green	7.55	405.93		405.93
						Green	17.63	864.02		864.02
						Green	6.23	364.42		364.42

CT	DX	MG	PT/CT	RF	XA	Alert Dose	E (mSv)	Total DAP A (cGy.cm <sup>2</sup> )	Total Dose A (mGy)	Ti Trr (r)
						Green	0.02	11.70		
						Green	0.01	5.70		
						Green	0.00	3.30		
						Green	0.01	6.60		

CT	DX	MG	PT/CT	RF	XA	Alert Dose	E (mSv)	Acc. Avg. Glandular Dose (mGy)	Acc. Avg. Glandular Dose Right (mGy)	Acc. Avg. Glandular Dose Left (mGy)
						Red	3.37	28.06	14.67	13.39
						Orange	0.47	3.95	1.71	2.24
						Orange	1.91	15.88	8.11	7.77
						Orange	1.43	11.94	6.41	5.53

CT	DX	MG	PT/CT	RF	XA	Alert Dose	E (mSv)	Total DAP AB (cGy.cm <sup>2</sup> )	Total Dose AB (mGy)	Total Time AB (min)
						Green	3.83	2130.50		0.15
						Green	1.89	1050.10		1.42
						Green	4.73	2626.00		1.12
						Green	1.63	905.50		0.48
						Green	4.03	2237.10		0.25

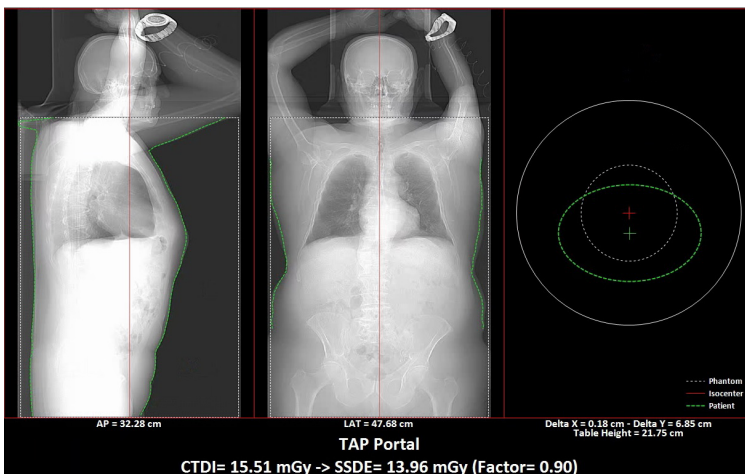
CT	DX	MG	PT/CT	RF	XA	Alert Dose	Radionuclide Total Dose (mBa)	E (mSv)	Total DLP (mGy.cm)	Total DLP 16 (mGy.cm)
						Green	176.69	10.30	412.33	
						Green	176.87	12.66	549.87	
						Green	129.20	7.12	280.55	
						Green	129.20	5.85	199.69	
						Green	182.80	12.34	524.83	
						Green	190.39	12.66	544.71	

CT	DX	MG	PT/CT	RF	XA	Alert Dose	E (mSv)	Total DAP AB (cGy.cm <sup>2</sup> )	Total Dose AB (mGy)	Total Time AB (min)
						Orange	91.38	35145.64	6319.69	130.04
						Green	3.34	1286.16	119.82	7.08
						Green	1.48	568.56	21.99	0.38
						Green	2.87	1104.07	70.41	1.72

**Patient at isocenter in scanner:**

A new feature that will assess the patient centering during the examination, reinforcing good professional practices (a patient shift with respect to the isocenter may influence the dose).



**Other new features:**

- **Single sign-on authentication (SSO):** A method that allows a user to access multiple computer applications by performing only one authentication.
- **RDM connection to the enterprise master patient index (EMPI):** a solution to bring patient identities closer together for a complete dose synthesis per patient.
- **Improvement of the dose data collection module through PACS:** Now, in addition to collecting from RDSR format and secondary capture, data can also be collected from the DICOM header in a more fluid and efficient way.



RDM, powered by our partner MPTronic.