

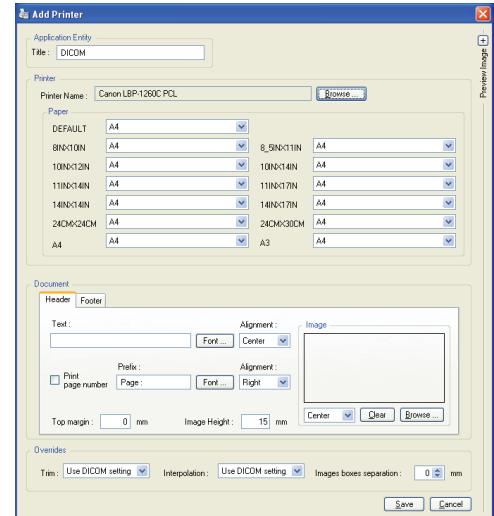


Your DICOM distribution experts.

DMC-EZ DICOM Printer-LF

Experience seamless integration of the DMC-EZ DICOM printer-LF solution into your institution's workflow, offering a cost-effective avenue to furnish patients and referring physicians with invaluable hard copies of studies.

Bid farewell to the burden of costly film expenditures as our software transforms images into near photographic-quality prints on plain paper, effortlessly accessible via DICOM Print functionality. Elevate your printing standards with DMC-EZ, simplifying your imaging output needs while maintaining superior quality.



DMC-EZ DICOM Printer Software Features

- Supports multiple associations
- Multiple DICOM Print AE Titles (Alias)
- Supports multiple laser and/or inkjet printers
- Customizable header and footers
- DIMSE services to act as SCP
- Configurable support for multiple film to paper sizes (3.5" x 5", 4" x 6", 5" x 7", 8" x 10", 8.5" x 11", 8.5" x 14", A3, A4, A5, A6, B4, B5, half letter, executive, 11" x 17", 13" x 19")
- Maximum print resolution, 4800 x 2400 DPI.
- 2) 250 sheet paper trays
- **Patented technology.**

Epson WF-7840

The WorkForce Pro WF-7840 wide format printer, powered by PrecisionCore®, offers up to 13" x 19" printing. It features color 12 ISO and black of 24 ISO ppm print speeds, a high monthly duty cycle, and saves up to 40 percent on printing costs vs. color lasers. Ultra high-yield cartridges print up to 2200 color pages, with a total paper capacity up to 500 sheets.

DMC-EZ DICOM Printer Server and Software

High performance CPU contains the DICOM print server software. DICOM Printer Server PC running Windows® 10 or 11 controls WF-7840 and connects to DICOM network.

309 Laurelwood Rd. Suite 20
Santa Clara, CA 95054
sales@sstgroup-inc.com

Sales Support: 800.944.6281
Outside US: 408.350.3450
Fax: 408.350.3100